

PROPHON

SOUND SYSTEMS

PLA2611 mkII

fullrange compact line array
active or passive for tour and installation



MADE IN SWEDEN
SINCE 1985

PLA2611 mkII

Next generation compact line array system, with phase-coherent FIR-coefficient filter,
Networking capabilities, with smart, quick and innovative rigging hardware

FEATURES

- ▶ 2-way active or passive line array module
- ▶ Active version with built in amplifiers and DSP
- ▶ Passive version with external systems amplifiers
- ▶ AES in / link on active and pasive version
- ▶ FIR-filters for optimum phase responce
- ▶ 60Hz - 19kHz frequency responce
- ▶ 2 x 6,5" Neodymium woofers on waveguides
- ▶ 1" driver with 1,7" Voice Coil mounted on waveguide
- ▶ Controled dispersion pattern of H110 x V15
- ▶ "Colapsing" rigging hardware, allows for fast rigging
- ▶ 3-point rigging hardwares
- ▶ The passive version uses our systems amplifiers with DSP, AES, Network, FIR.

APPLICATIONS

- ▶ Compact portable sound system with subwoofers
- ▶ installation in live performance stages
- ▶ Installation in club and music facilities
- ▶ Fullrange speaker
- ▶ The rental and event industry
- ▶ Full scale line array or smaller point-source systems
- ▶ Groundstacked on subwoofers

INTRODUCTION

The PLA2611 mkII is part of our next generation Prophon line array systems, with FIR-filters, networking, AES, new DSP-technology, and new 3-point rigging hardwares with colapsing function for easy and safe rigging, where you first set the angles by using the splay sprints, and when lifting the system each line array speaker automatically locks in the correct angle position. The lifting point is adjustable with sliding function for setting tilt of the line array.

PLA2611 is Available in two versions:

1) passive,

with a dedicated passive crossover network, using one channels on an external Prophon 19" DSP-systems amplifier with AES, FIR filters, including a vast array of custom filters, EQ's, delay, limiter, for room acoustics and systems tuning.

An extra option is to use our FIR systems-DSP processor, if you want to use your own amplifiers.

2) Active,

With built in class-D amplifier modules and a powerful DSP with eight presets for different usage and setups.

The built-in amplifiers consists of 500W RMS driving the two 6,5" woofers, and a 150W RMS amplifier driving the 1" driver, with, seperate phase-coherent FIR-filter coefficients handling phase correction, amplitude correction and crossover.

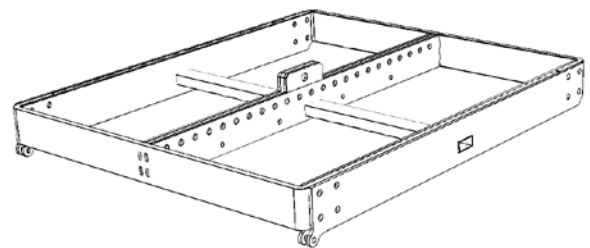
The new DSP processor in the active version features an abundance of upgrades such as AES in via XLR, that can be assigned and linked via the two RJ485 network connectors, furthermore the new software allows for managing up to 255 speakers in a network, where grouping in several depth can be made, and where each group can assign gain, delay and EQ for adjusting and compensating for system integration and acoustic adaptation.



PLA2611, 6 pcs. with bumper frame



6 x PLA2611 transported in case



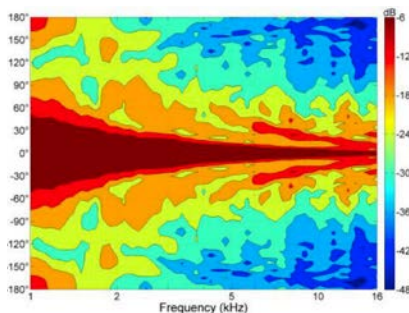
Bumper frame with adjustable lifting point

TECHNICAL SPECIFICATIONS

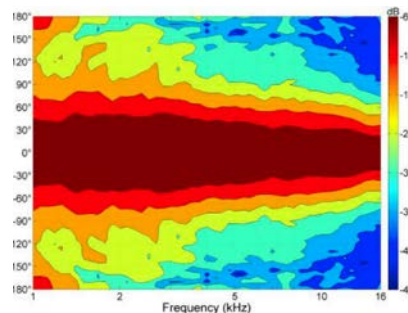
Model	PLA2611 MK2
Design	2-way compact line array module, with vented bassreflex construction - Active version with built-in amplifiers (500W + 150W) and on-board DSP. - Passive version 8 ohm, with built-in dedicated passive crossover network
Components	LF: 2 x 6,5" neodymium woofers mounted in a di-polar bassreflex configuration, HF: 1" neodymium driver with 1,7" VoiceCoil mounted on waveguide and horn
Power Handling	LF: 2 x 300W cont. HF: 50W cont. Overall: 650W cont.
Impedance	Active: LF: 2 x 8 ohm = 4 ohm, HF = 8 ohm Passive LF: 2 x 16ohm = 8 ohm, HF=8 ohm
Max SPL (calculated)	131dB @ 1m.
Frequency response	60Hz - 19kHz
Dispersion	H110 x V15
System setup passive	The passive version uses one amplifier channel on any of our DSP-systems-network-amplifiers, each channel can drive 4 pcs. of PLA2611 into 2 ohm load.
System setup active	The active versions features two seperate amplifiers with 500W+150W and on-board DSP with AES in/link, network with software for monitoring, grouping, and for system settings such as delay, gain, EQ-points. etc. there are eight presets for a variety of setups, such as fullrange, HP-filter, groundstacked, Line array x 4, line array x 6, line array x 8, line array x 10, line array x 12.
Extended information active version	Input power 90V-250VAC, switched mode power supply with class-D amplifiers on-boards DSP with eight presets, 500W + 150W amplifier modules balanced XLR input / link out, analogue or AES. Custom FIR-coefficients. Volume potentiometer for adjusting gain and setting presets



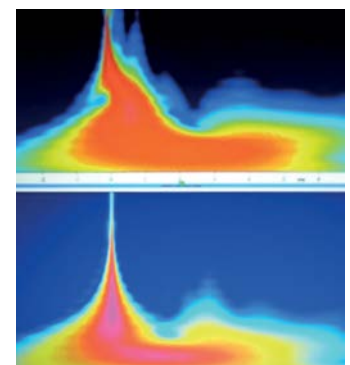
Recommended systems DSP-amplifiers with FIR filters and dedicated presets



Dispersion pattern vertical



Dispersion pattern horizontal



FIR filter result before and after

PROPHON

SOUND SYSTEMS



MADE IN SWEDEN
SINCE 1985

Prophon Audio & Teknik AB, Stockholm, Sweden
Linjalvägen 10C, 187 66 TÄBY
Web: www.prophon.com | Tel: +46 8 92 86 00 | Mail: info@prophon.com